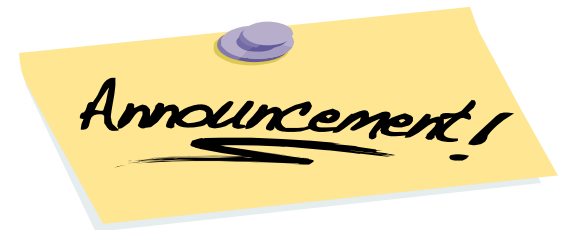


NEWSLETTER FOR THE ACTIVE LIVING OUTINGS
PROGRAM
MARCH—MAY 2010



45 Talbot Avenue
Balwyn 3103

Telephone 9836 9681



FEES INCREASE FOR 2010

Over the past two years the price of fuel has increased markedly. It is always our endeavour to keep prices to a minimum while still providing the best quality we can. I hope you will understand that we have to increase some of our prices. Therefore the cost of the Bus for Day Trips will increase by \$1.00, it will now cost \$6.00 for transport within our pickup area and \$9.00 for transport outside our pickup zone.

A Word from Brenda:

The year is already flying past and we have had many new members join the Program in the last few months. I hope you are enjoying the outings and will also enjoy the opportunity to make new friends while seeing and visiting places of Interest.



PLEASE REMEMBER THE MAGICAL CABARET

When: Thursday 18th March 2010

Where: Evergreen Centre
45 Talbot Avenue, Balwyn

Time: 5-8pm

Cost: \$25.00 (\$30.00 if transport is required)

Dress: Black and White, prizes for the best outfit!

This will be a fabulous night of entertainment with great food and lots and lots of fun. See a staff member or ring the office to make a booking.

Cheers

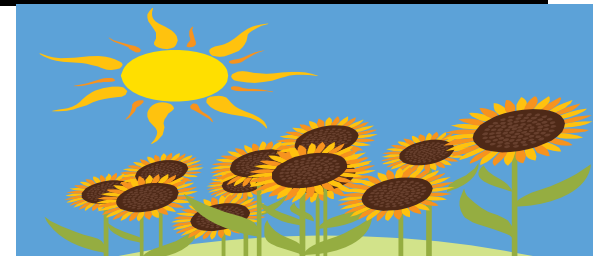
Brenda Dennis

Coordinator Active Living Programs

MARCH 2010 THURSDAY TOURISTS



**THURSDAY TOURISTS
FULL DAY PROGRAM .
PICKUPS FROM 10.30AM
UNLESS SPECIFIED
TELEPHONE BRENDA 9836 9681**



4th

We visit eclectic Fitzroy and lunch at “The Tenth Muse” café where everything is prepared on site. Try some of their delicious cakes for dessert! Choose from the Menu.

Bus \$9.00

11th

9.00am Start

A special outing to The Peppermint Ridge Farm .

This farm grows Australian Bush Food and everything is organic. We will have a tour of the farm and a talk about the uses of the bush food they grow. At lunch you will be able to sample the many different types of bush teas they grow on the property. This will be a very interesting place to visit

\$40.00



18th

NO OUTING, WE HAVE THE MAGICAL CABARET

5.00 - 8.00pm



25th

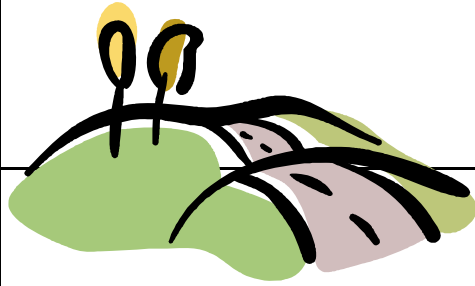
The Melbourne Flower and Garden Show

We park at Etihad Stadium, this gives you the opportunity to have a look at the Stadium, before getting a shuttle bus through the city to the Carlton Gardens. We will have a picnic lunch on site.

\$35.00

APRIL 2010

THURSDAY TOURISTS



THURSDAY TOURISTS
Full day Program . Pickups from 10.30am
unless specified
Telephone 9836 9681



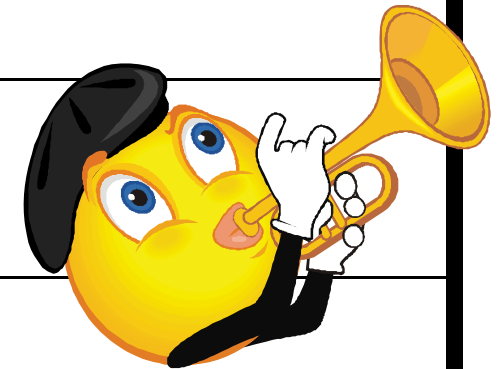
1st
Early Start 9.30am
Drive to Yarragon with Lunch at the Commercial Hotel
Choose your own Lunch
Transport \$9.00

8th
We visit Emerald
Lunch at Elevation , your choice from the Menu
Transport \$9.00

15th
Drive to Pakenham and surrounds with lunch at the award winning Grayn Restaurant
\$35.00



22nd
"The Glen Miller Story"
Its Morning Melodies and Lunch at Moonee Valley
\$36.00



29th
9.30am Start
Off to Toolangi today with a chance to explore this lovely little town
Lunch at the Toolangi tavern, its your choice from the Menu
Transport \$9.00

MAY 2010

THURSDAY TOURISTS



THURSDAY TOURISTS
Full day Program . Pickups from 10.30am
unless specified
Telephone 9836 9681

6th

We are visiting the historic home of Heronswood and having lunch at the “Fork to Fork” café.
Select from the menu
Transport \$9.00

13th

We are off to tour Gisborne, lunch at the Gisborne Peak Winery. This will your choice from the menu so bring
some money!
Transport \$9.00

20th

We go up to the Dandenongs and visit Monbulk . Lunch at the very pretty Rose Cottage
\$26.00

27th

Early Start 9.30am
KooWeeRup here we come. We explore the town and sights. Lunch at the historic Royal Hotel
\$25.00

